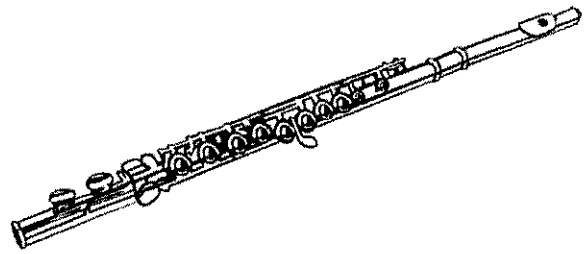


NHHS Royal Regiment

Woodwind Packet:
Flute



Rehearsal Etiquette

1. Always give your undivided attention to the director or leader.
2. Remember that it's not about you, section playing is teamwork.
3. Practice at home and know your part before the first rehearsal.
4. Respect all members and be kind at all times.
5. Leave personal problems out of rehearsal. Always be ready to do your best work.
6. Be positive and constructive when offering advice and helping others.
7. Be receptive when advice is offered.
8. Know your role in the section, in the group, and in the music.
9. Always have a pencil and required materials.
10. Be set up ready to play at the beginning of rehearsal or practice.

Flute Fingering Chart

Low B foot joints only.

C	C \flat	D \flat	D	D \sharp	E \flat	E

F	F \sharp	G \flat	G	G \sharp	A \flat	A	A \sharp	B \flat

B	C	C \flat	D \flat	D	D \sharp	E \flat	E	F

(lowers pitch)

F \sharp	G \flat	G	G \sharp	A \flat	A	A \sharp	B \flat	B	C

C \flat	D \flat	D	D \sharp	E \flat	E	F	F \sharp	G \flat	G

(lowers pitch)

G \sharp	A \flat	A	A \sharp	B \flat	B	C	C \flat	D \flat	D

BREATHING EXERCISES

The purpose of these exercises is to develop natural and effective breathing habits for excellent brass playing. These exercises are intended to help develop efficiency, coordination, and flexibility in your breathing. When doing these exercises, breathe fully and think of breathing simultaneously throughout your respiratory system.

To produce a good tone and sustain a phrase, a player must have a good embouchure and supply adequate breath support. When breathing, you should always keep your throat open and demonstrate good posture-chest high, shoulders back but not raised, and abdominal muscles relaxed. Remember- **AIR IS THE FUEL OF YOUR INSTRUMENT!**

Exercises

Flow #1- Breathe in for 4 cts, out for 4; in 4, out 8, in 4, out 12, in 4, out 16

Flow #2- In 4, out 8/ in 2, out 8/ in 1, out 8

Bow-Imagine you have a bow/arrow, Draw back with one hand (as if to draw the bow, while inhaling smoothly let go of the bow and “shoot” the air smoothly and continuously forward. Repeat.

Dart-Imagine a dartboard. Focus on the bulls-eye. Draw the dart back while inhaling, shoot the dart “forte” toward the bulls-eye, Repeat 3 times.

Plane-Imagine you have a paper airplane. Glide the airplane across the room using “piano” air stream. Repeat 3 times.

Candles-Quickly blow out one candle, then repeat up to 30 times. On the last time exhale completely, expel all of the air.

Purple Cow- For Stamina and Flow. Breathe in 4, out 4. Breathe in 3, out 3. In 2, Out 2. In 1, Out 1. Repeat

ARTICULATION and TECHNIQUE

Articulation, or tonguing, is the tongue's manipulation of an air stream to create a particular emphasis of sounds. The placement of the tongue greatly influences the sound, register, amplitude, and attack. Be sure to always use a "T" or "D" attack which places the tongue behind the upper teeth.

Common Attacks: For most tonguing on brass instruments the "t" attack is the most widely used. Depending on the instrument and the register in which it is being played, most players prefer the following syllables:

TA, TU, TOH, TEE, TAW

Legato: Legato tonguing should be used for smooth passages. To produce this articulation, the player should gently articulate a *doo* or *daw* syllable. The trombone should use this articulation to substitute for all slurs except natural slurs.

Staccato (.): Staccato tonguing is more difficult to execute on a brass instrument than legato tonguing because the tones must be separated and stopped with the breath. Staccato means to play the note detached and short. Only in certain circumstances should staccato notes be stopped with the tongue.

Accented (>): Accented notes are to be played with more attack than common articulations. It requires ample supply of air and a quick release of the tongue. The focus of the accent should be on the air behind the attack, not the tongue itself.

Marcato (^): The marcato accent is similar to the regular accent, but is to be played shorter and heavier than the common accent.

Sforzando (sf): Similar to accent tonguing, but more exaggerated. Many players find they need to place the tongue between the teeth in sort of a spitting action in order to achieve the desired effect. The result is an explosive, heavy attack.

Tenuto (-): Tenuto articulations are marked by a short, heavy line above or below a note. It is to be held for its full value, and is meant to give special attention or stress to that note.

De La Sonorite

Art et Technique

Marcel Moyse

$\text{♩} = 60$

1- *ff*
2- *pp*

6

11

16

22

This exercise should be practiced with a good deal of latitude in the tempo, fundamentally crotchet = 60. Repeat each group twice, altering and correcting mistakes noticed in the first attempt; if necessary one may even start again a third time, though in order to avoid fatigue at the end of the exercise one should not be over-zealous.

The first time through should be done at fortissimo and the second time though should be done at pianissimo. Both run throughs should be in one breath.

2 E. J. 1 If playing as a group, please begin and end where you see an asterisk (*)

Quotienten sind für die Reproduktion (phonographisch, mechanisch, ...), ohne portall, sans autorisation, concesso una contraccio.

A travailler successivement avec chacune des dix articulations suivantes:

To be practised with each of the following ten articulations:

Nacheinander mit den folgenden zehn verschiedenen Artikulationen zu üben:

Trabajese sucesivamente con cada una de las diez siguientes articulaciones:

A musical staff in treble clef with a key signature of one flat (Bb) and a 4/4 time signature. It contains a single melodic line with ten numbered points (1-10) indicating specific articulation locations. The notes are: 1 (quarter), 2 (quarter), 3 (quarter), 4 (quarter), 5 (quarter), 6 (quarter), 7 (quarter), 8 (quarter), 9 (quarter), 10 (quarter).

次の10のアーティキュレーションで順々に練習しなさい。

Reprise à l'octave — オクターブ上で繰り返す。

A musical staff in treble clef with a key signature of one flat (Bb) and a 4/4 time signature. It begins with an asterisk (*) on a treble clef, followed by a double bar line. The rest of the staff contains the same melodic line as the previous staff, but starting from the second measure.

Five musical staves in treble clef with a key signature of one flat (Bb) and a 4/4 time signature. Each staff shows the same melodic line as the previous staff, but transposed to a different register. The first staff is in the original register (Bb). The second staff is one octave higher (C). The third staff is two octaves higher (D). The fourth staff is three octaves higher (E). The fifth staff is four octaves higher (F).

X

O

3

 STOP
 If playing
 with group.

Handwritten musical notation on eight staves. The notation includes treble clefs, a key signature change to E-flat major (E^b S. o.), and various musical symbols such as 'X', 'B^b', and 'Y'. The notation consists of eighth and sixteenth notes, rests, and accidentals (sharps and flats) across the staves.

8

8

8

8

8

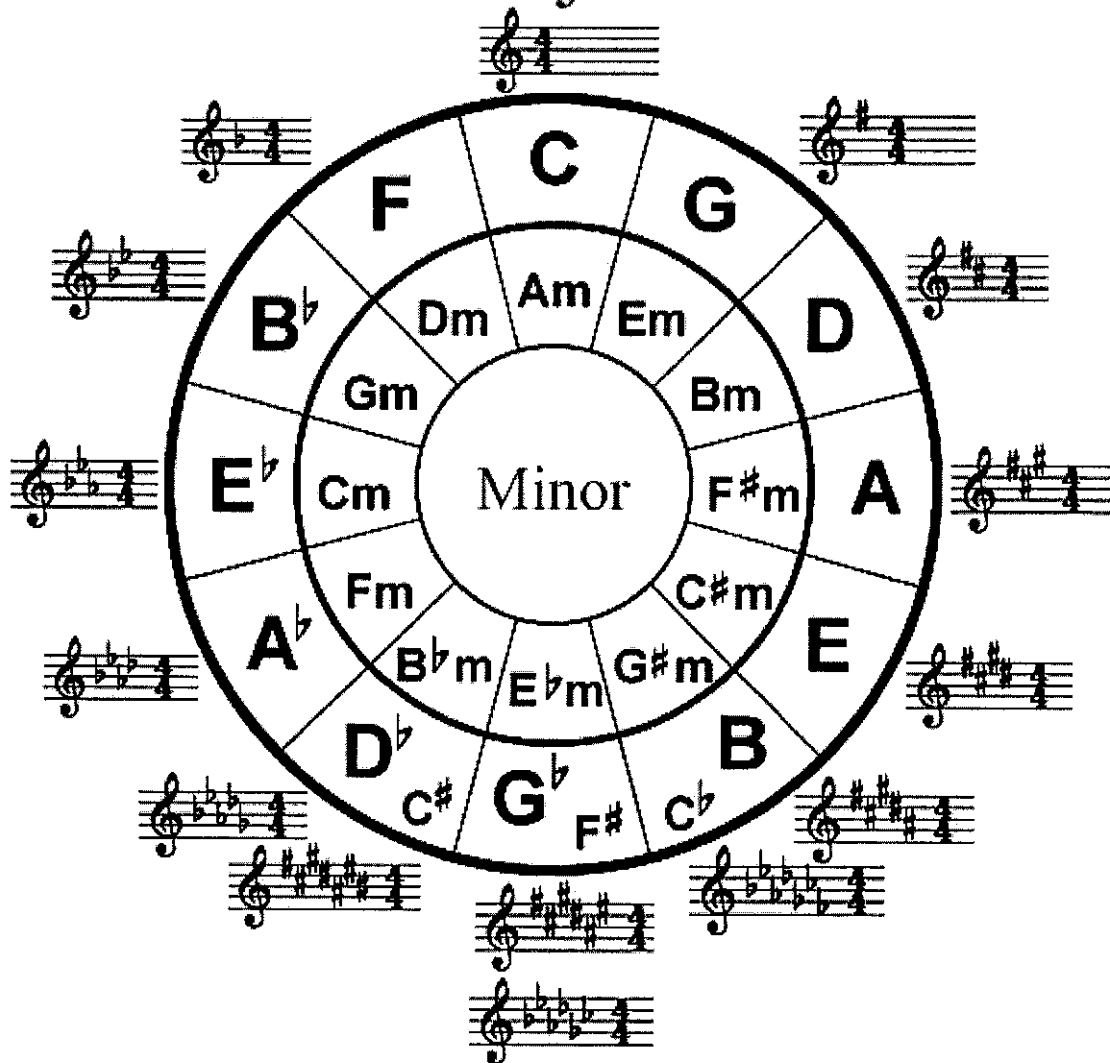
8

8

8

A.L. 17.204

Major

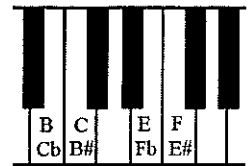


Glossary of Music Terms

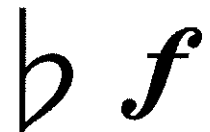
Accelerando -	gradually quicken tempo.
Adagio -	Tempo marking: having slow movement; restful at ease.
Allegro -	Tempo marking: lively and fast.
Andante -	Tempo marking: at walking speed.
Chromatic scale-	Includes all twelve notes of the western tonal system.
Clef -	A symbol at the beginning of the staff defining the pitch of the notes found in that staff.
Coda -	Closing section of a movement.
Consonance -	Groups of tones that are harmonious due to their frequency ratios.
Dissonance -	Harsh, discordant harmonies that don't align in nice frequency ratios.
Enharmonic Equivalents -	Two notes that differ in name, but sound the same.
Fermata -	Marking to hold a note or rest held beyond the written value at the discretion of the performer.
Flat -	A symbol indicating that the note is to be diminished by one semitone.
Forte -	A symbol indicating to play loud.
Glissando -	Sliding between two notes.
Harmony -	Vertical alignment of two or more pitches sounding simultaneously.
Interval -	The distance in pitch between two notes.
Intonation -	The relative pitch relationship between two tones.
Key signature -	The flats and sharps at the beginning of each staff line indicating the diatonic key of music the piece is to be played.
Legato -	Indicates musical notes are to be played or sung smoothly and connected.
Largo -	Tempo marking: slowly and broadly.
Marcato -	Indicates a short note, long chord, or passage to be played louder or more forcefully than surrounding music.
Piano -	An instruction in sheet music to play softly. Abbreviated by a "p".
Presto -	Tempo marking: very fast.
Rhythm -	The organization of sound over time.
Scale -	Successive notes of a key or mode either ascending or descending.
Sharp -	A symbol indicating the note is to be raised by one semitone.
Slur -	A curve over notes to indicate that a phrase is to be played legato.
Staccato -	Short detached notes, as opposed to legato.
Tenuto -	Marking to hold the note for its full value or with slight emphasis.
Tie -	A curve over two identical pitches to indicate a sustained note.
Timbre -	Tone color, quality of sound that distinguishes one verse or instrument to another. It is determined by the composite frequencies of the sound.
Time Signature -	A numeric symbol in sheet music determining the number of beats to a measure.



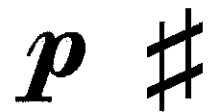
Coda



Enharmonic Eq.



Flat Forte



Piano Sharp



Slur



Staccato



Marcato



Tenuto